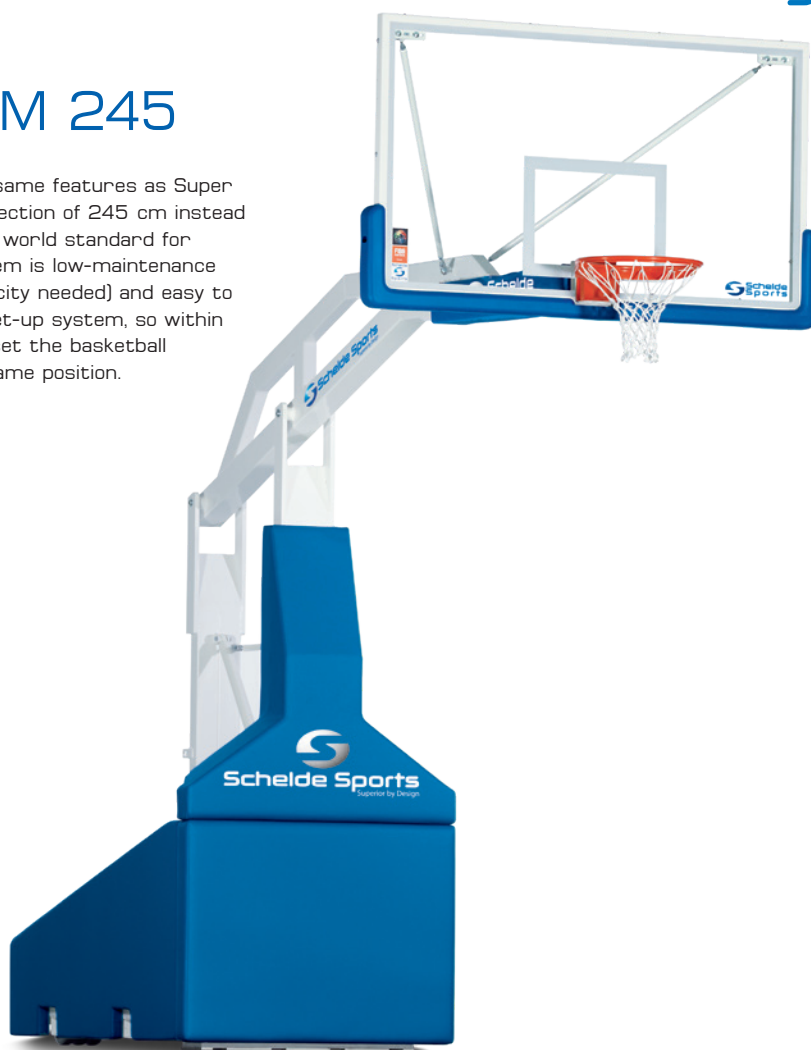


Super SAM 245

1612210

Super SAM 245 has the same features as Super SAM 325, but with a projection of 245 cm instead of 325 cm. SAM sets the world standard for excellence. The SAM system is low-maintenance (no hydraulic oil or electricity needed) and easy to operate. One step easy set-up system, so within 5 seconds 1 person can set the basketball backstop into the right game position.



LEVEL 2

Technical Specifications

Projection:	245 cm.
Positioning:	Lifting and lowering by use of SAM system (Spring Assisted Mechanism): easy, safe and low-maintenance.
Stability:	Fine tuning of the ring height for perfect adjustment in game position. Patented DSF system (Dynamic Sub Frame): when raising the unit, the base frame automatically lowers onto the floor. This ensures the basketball backstop is immediately in the right game position and the weight is evenly distributed. Strong and stable, white coated high-tensile strength steel frame. Lifetime maintenance free pivot bearings, 100% enclosed counter weights.
Wheels:	2 double swivel wheels in the front and 2 triple fixed wheels in the rear for optimal weight distribution, all with bearings for great mobility.
Backboard:	Patented dunk-proof 12 mm glass with a full-perimeter steel frame and cut-out for the ring.
Ring:	Schelde Sports Pro 180° Dunk Ring. Top competition breakaway dunk ring with multi-directional force flex and concealed net attachments. FIBA Level 1 & 2 approved
Net:	Sturdy nylon anti-whip basketball net, 6 mm.
Padding:	Impact area padding on both the front and sides of the base frame. Standard colour Schelde blue. Backboard protection padding is made of high density PU foam. Optional: paddings can be personalized. Contact us for further information.
Dimensions:	Storage position (l x w x h) ca 442x190x210 cm Automatic beam lock in storage position. Playing position (l x w x h) ca 505x190x395 cm. Automatic snap lock on telescope in playing position.
Transport:	Equipped with openings for a forklift truck for transport over longer distances
Anchored:	Floor hook at the rear of the frame. 2 positioning pins for quick and precise installation on the court. Floor connector set included for both PU floors and suspended floors.
Standard:	in accordance with EN-1270.
FIBA level:	FIBA Level 2 approved.



Storage position



Ring height 260 cm



Ring height 305 cm

Schelde Sports

E-mail: export@scheldesports.com
www.scheldesports.com

The Netherlands

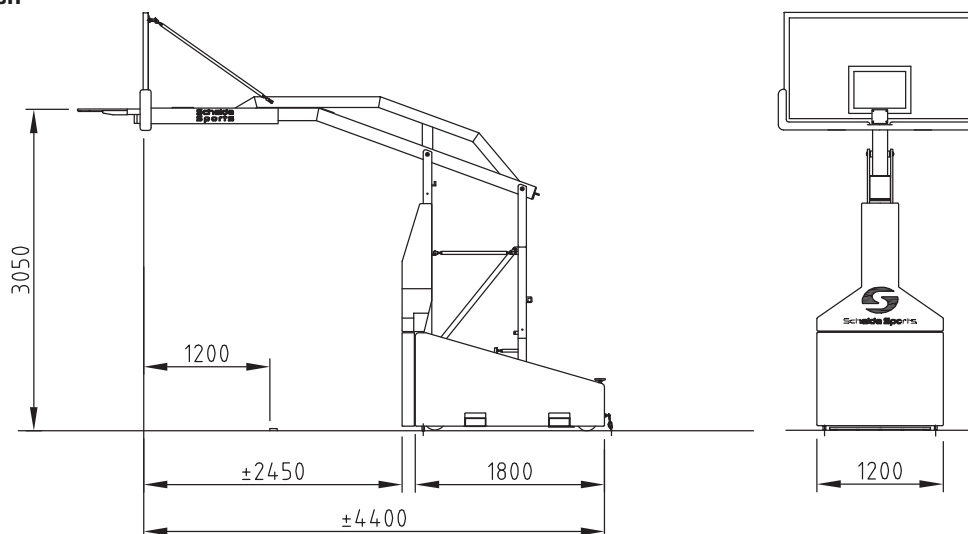
E-mail: verkoop@janssen-fritsen.nl
www.janssen-fritsen.nl

Belgium

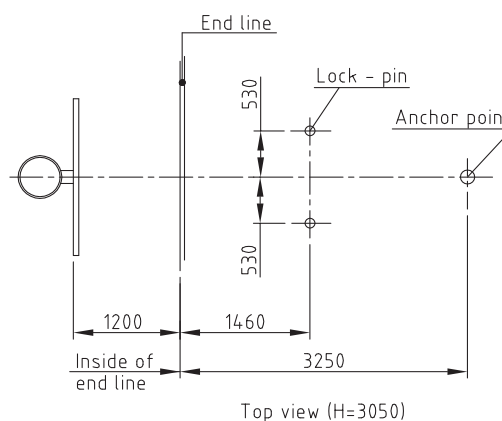
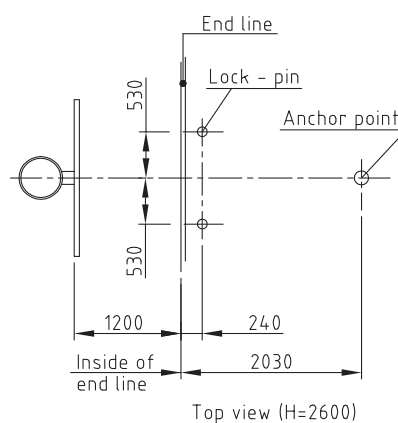
E-mail: info@janssen-fritsen.be
www.janssen-fritsen.be

1612210

Measurements in game position



Measurements for anchoring system



Super SAM 245

Weight/floor pressure

Total weight 1190 kg

Total load on wheels in transport position:

Front wheels 560 kg

Rear wheels 630 kg

Floor pressure in transport position:

Front wheels 2x2 7,3 kg/cm²

Front wheels 2x3 5,2 kg/cm²

Rear wheels 2x3 5,8 kg/cm²

Total load in game position:

Front (DSF/Pedestal Feet) 785 kg

Rear (wheels) 395 kg

Floor pressure (kg/cm²) in game position:

Rear wheels 2x3 3,7 kg/cm²

DSF Dynamic Sub Frame 1,6 kg/cm²

Floor Pressure while dunking (dunk & let loose)

Dynamic Sub Frame 2,8 kg/cm²

Floor Pressure while extreme dunking

Dynamic Sub Frame 4,75 kg/cm²

Projection (backboard to front of impact area) 245 cm

Distance from inside end line to nearest wall needed for setup with AUTOMATIC DSF is 445 cm. If distance is less, MANUAL DSF option is required. Minimum distance required for use with MANUAL DSF is 325 cm from inside end line to nearest wall.

Schelde Sports

E-mail: export@scheldesports.com
www.scheldesports.com

The Netherlands

E-mail: verkoop@janssen-fritsen.nl
www.janssen-fritsen.nl

Belgium

E-mail: info@janssen-fritsen.be
www.janssen-fritsen.be